

## I. Transperineal Biopsy Procedure Setup:

### A. US/Probe:

- a) Condom
- b) Precision Point
- c) US jelly
- d) US Machine, Biplanar Probe

### B. Table:

- a) Template Laminated
- b) Biopsy Pads
- c) Biopsy Gun
- d) Local Anesthetic: 1%/0.25% (50/50 mix) and 10cc Syringe x 2 with 10cc of local in each
- e) TP Access Device System
- f) Specimen cups x 12/Labels
- g) Lubricant
- h) Formalin/alcohol rinse

### C. Patient:

- a) Stirrups
- b) Scrotum elevated (3-inch tape, Press 'n' Seal)
- c) Straight Razor
- d) Skin Prep: Chlorhexidine vs. Betadin

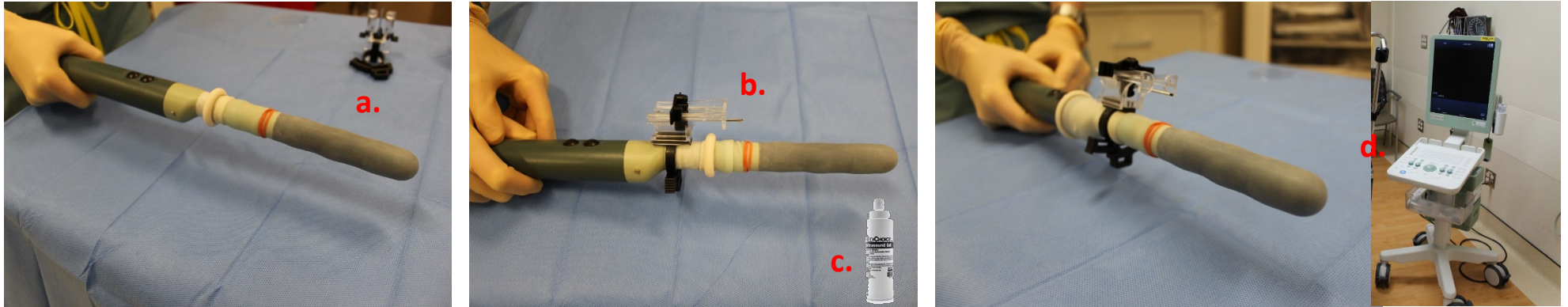
## II. Ordering Information:

Name of Device	Company	Order Number	
PrecisionPoint Transperineal Access System			
	Perineologic	REF: P1001	
25G x 1.5 Needle			
	Covidien Monoject	REF: 1188825112	
	BD PrecisionGlide	REF: 305127	
Biopsy Foam Pads			
	Fisherbrand	Cat No.: 22038222, +H1382203822238	
	Mercedes Medical Platinumline Biopsy Pads	MER BLKSPNG	
Ultrasound Gel			
	Medichoice	10080212	
Ultrasound Probe Condom			
	Civco Neoguard Transducer Cover (2.0x30cm)	REF: 610-1127	
14G Angiocath			
	Braun Introcan Safety 14G x 1.25	REF: 4251890-02	
20G x 6, 0.9mm x 152mm Spinal Needle			
	BD Spinal Needle	405211	
Bard 18G x 25cm Biopsy Gun			
	Bard Max-Core	REF: MC1825	

**For any questions or concerns, please contact the MUSIC Coordinating Center at 855.456.2035 or [musicurology@umich.edu](mailto:musicurology@umich.edu)**

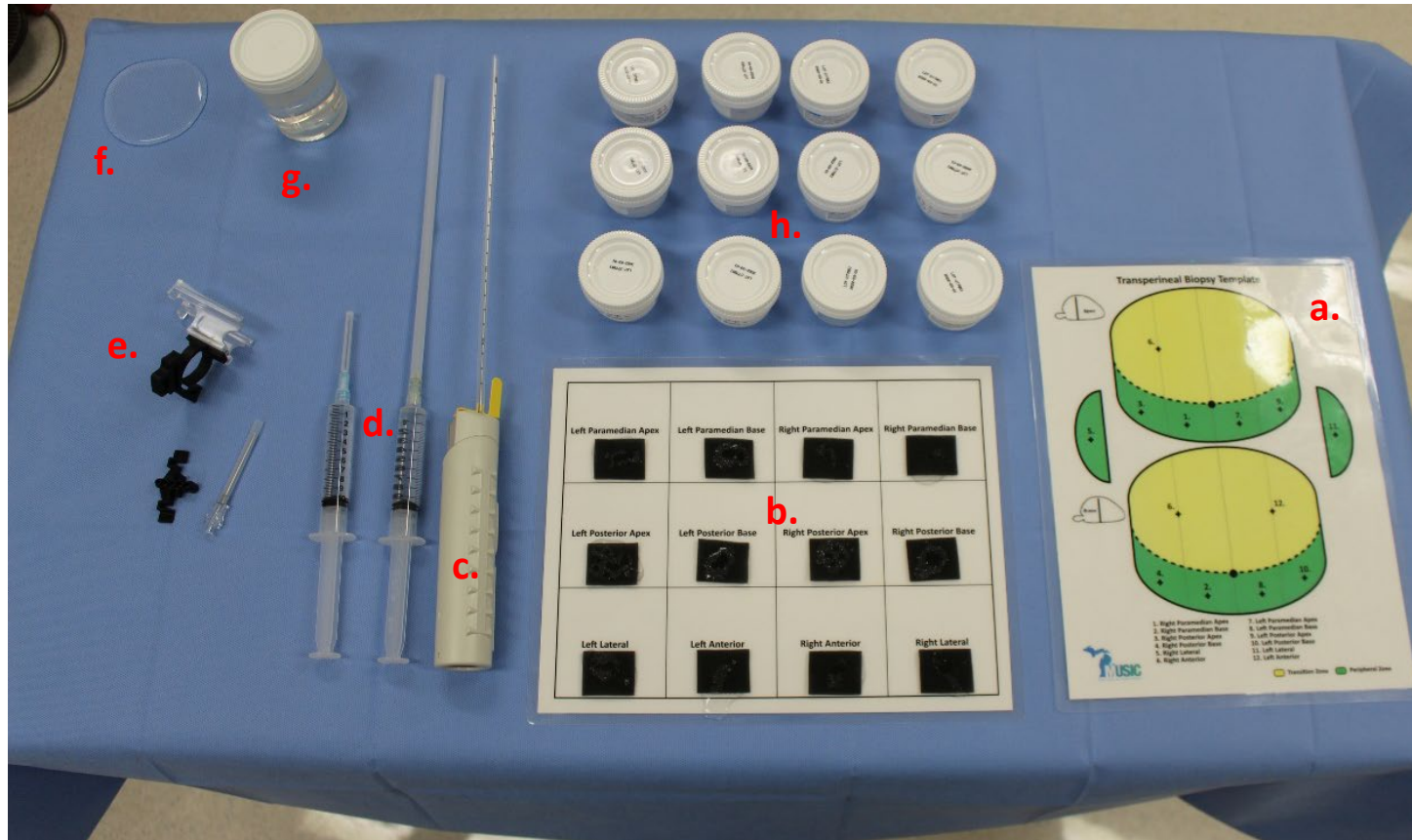
### III. Appendix:

#### A. US/Probe Setup:



- a. Condom
- b. Precision Point
- c. US jelly
- d. US Machine, Biplanar Probe

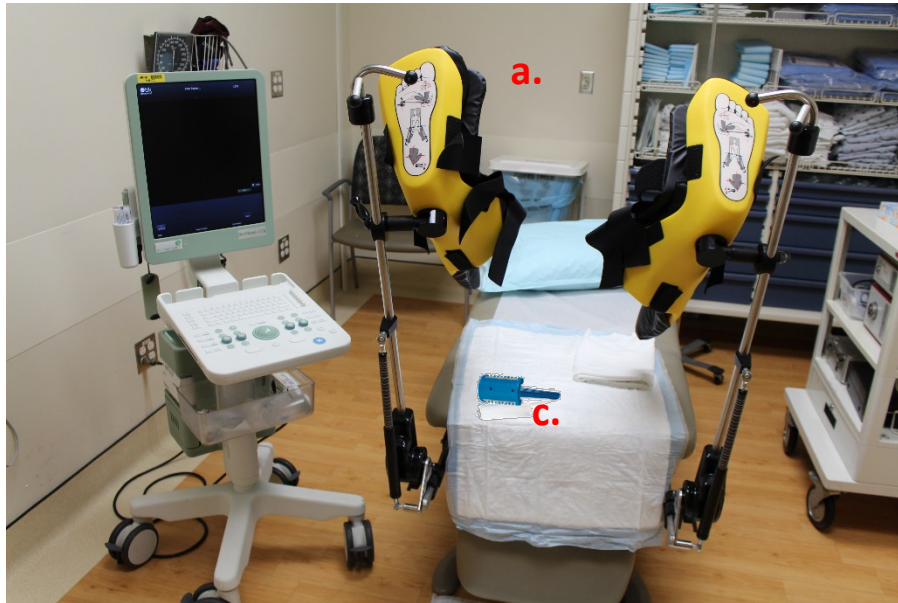
## B. Table Setup:



- a. Template Laminated
- b. Biopsy Pads
- c. Biopsy Gun
- d. Local Anesthetic: 1%/0.25% (50/50 mix) and 10cc Syringe x 2 with 10cc of local in each
- e. TP Access Device System
- f. Lubricant
- g. Formalin/alcohol rinse
- h. Specimen cups x 12/Label

*For any questions or concerns, please contact the MUSIC Coordinating Center at 855.456.2035 or [musicurology@umich.edu](mailto:musicurology@umich.edu)*

### C. Table Setup:



- a. Stirrups
- b. Scrotum elevated (3-inch tape, Press 'n' Seal)
- c. Straight Razor
- d. Skin Prep: Chlorhexidine vs. Betadine